



Q.VITEC

Erkennen, was möglich ist

Vision Q.400 | Q.400 *[plus]*

Image processing
Manufacturer & integrator

www.qvitec.de

Application

The following pages show a small number of our applications and uses in successful case studies from Q.VITEC practical experience.

All these are the results of highly efficient image processing.

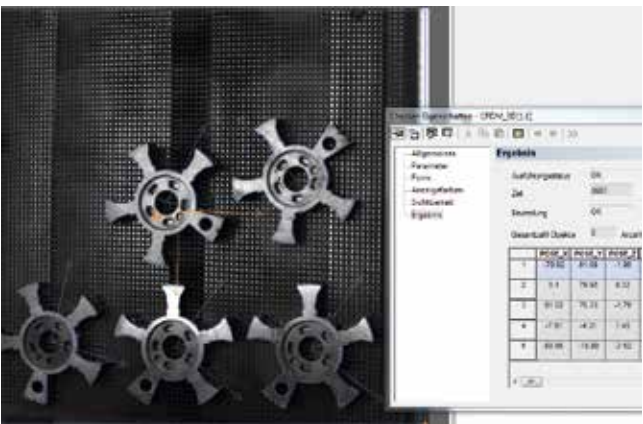
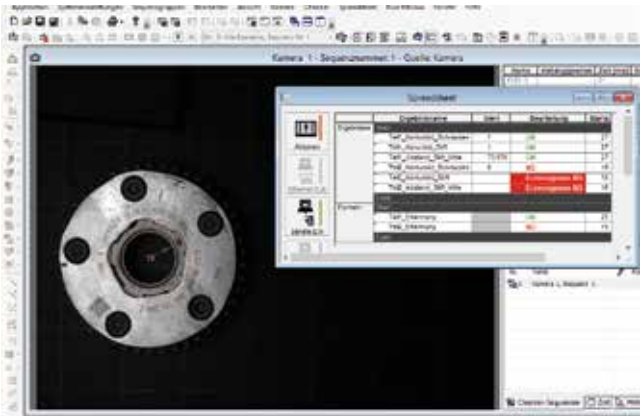
Weld seam detection

- Industry Automobile industry
- Application Detection & measurement
- Assignment Identification of the seam between rotor & shaft



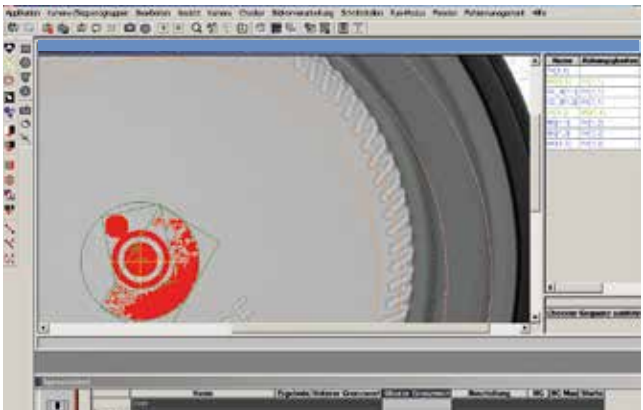
Position recognition

- Industry Automobile industry
- Application Inline production control
- Assignment The camera checks the position and quality



Depalletisation

- Industry Universal
- Application Position recognition
- Assignment 3D gripping position for robots

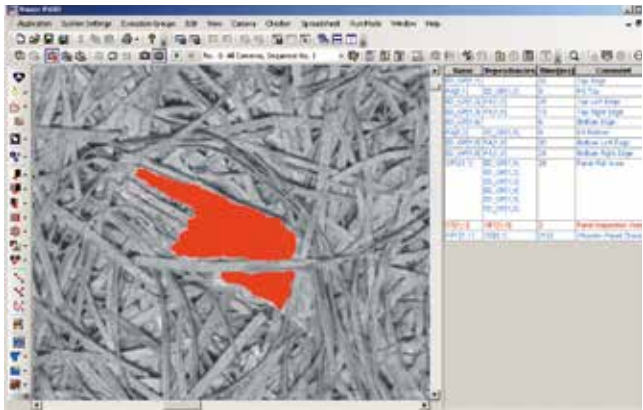


Inspection of seals

- Industry Medical & plastics industry
- Application Fault detection
- Assignment Inspection of the sealing surface for damage

Wood wool panel testing

- Industry Building materials industry
- Application Inline testing
- Assignment Detection of defective parts



Contact field test

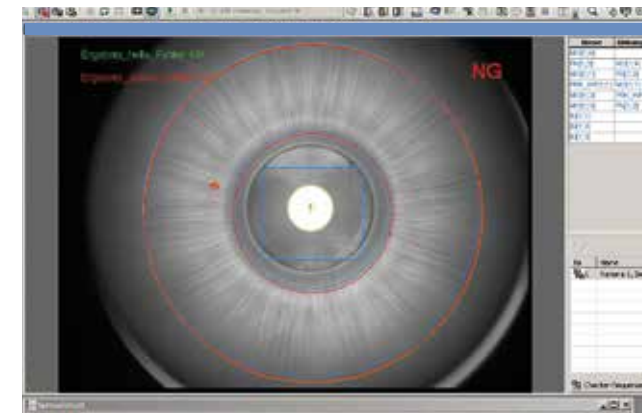
- Industry Electrical & metal industry
- Application Inline inspection of electronic components
- Assignment Inspection of contact fields, etc.





Tool inspection

Industry	Tool & metal industry
Application	Quality control
Assignment	Detection of various errors

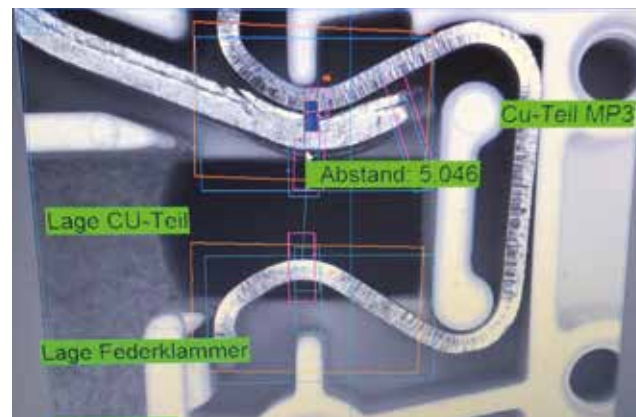


Inspection of packaging

Industry	Packaging & foodstuffs industry
Application	Fault detection
Assignment	Check for missing and NOK parts

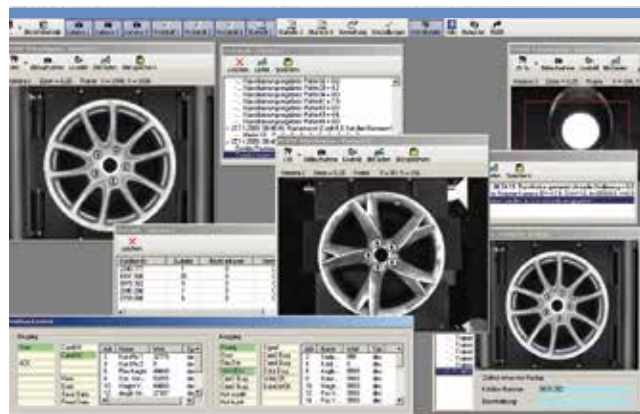
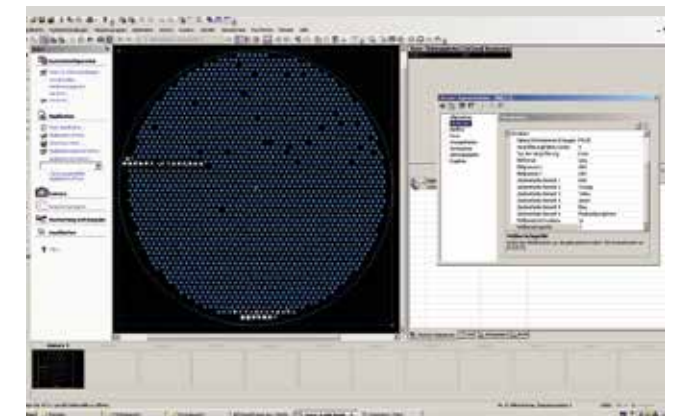
Contact location check

Industry	Electrical industry
Application	Measurement & position control
Assignment	Checking of tolerances



Diaphragm borehole inspection

Industry	Pharmaceutical industry
Application	Quality control
Assignment	Monitoring of the micro drillings



Rim type identification

Industry	Automobile industry
Application	Detection & classification
Assignment	Height, width, design, valve hole

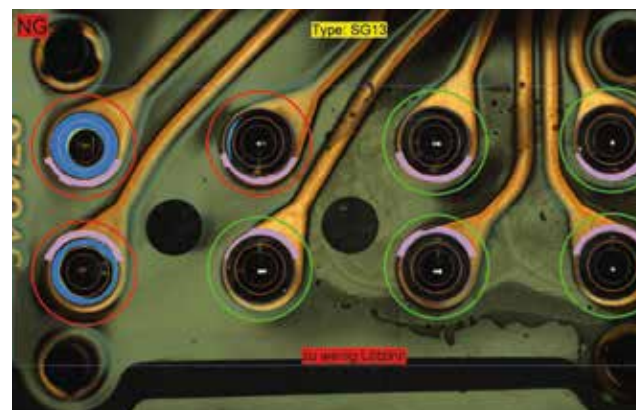


Instrument panel testing

Industry	Automobile & electronics Industry
Application	Printed image control
Assignment	Comparison with DXF files

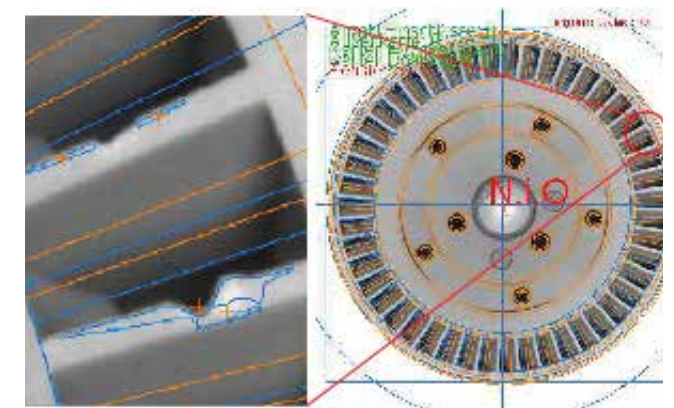
Solder joint inspection

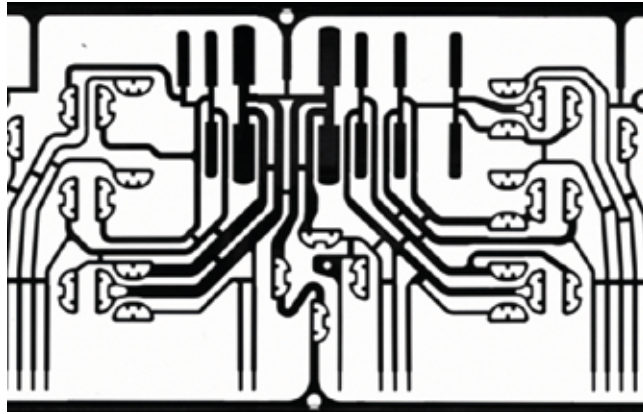
Industry	Electronics industry
Application	Quality control
Assignment	Solder joint monitoring



Breakout control

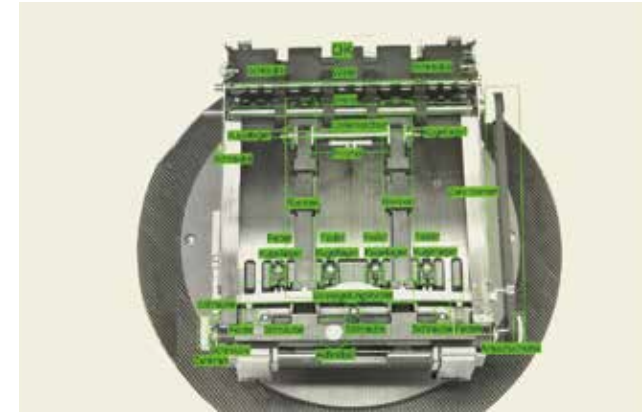
Industry	Automobile & metal industry
Application	Inspection & measurement
Assignment	Detection of flaws





Punching pattern control

Industry	Metal & automobile industry
Application	Precision measurement
Assignment	Precision measurement of critical dimensions



Assembly supervision

Industry	Universal
Application	Manual assembly of components
Assignment	Check for completeness

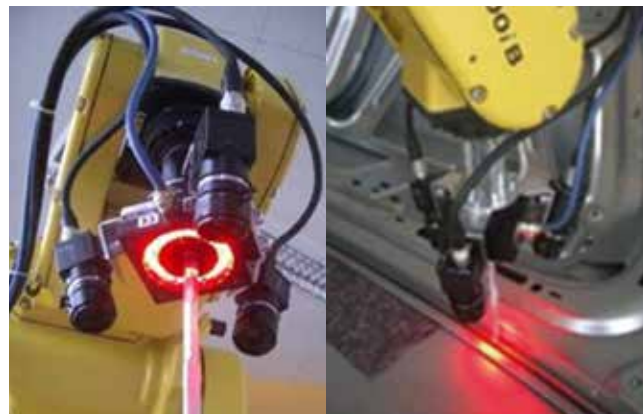
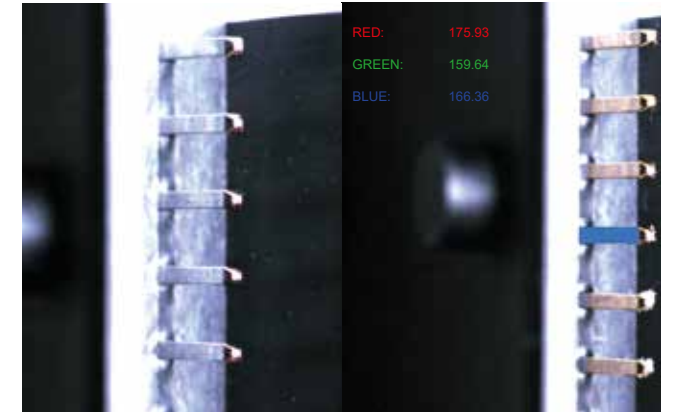
Camshaft inspection

Industry	Automobile industry
Application	Type identification & measurement
Assignment	Cam disk measurement < 100 ms



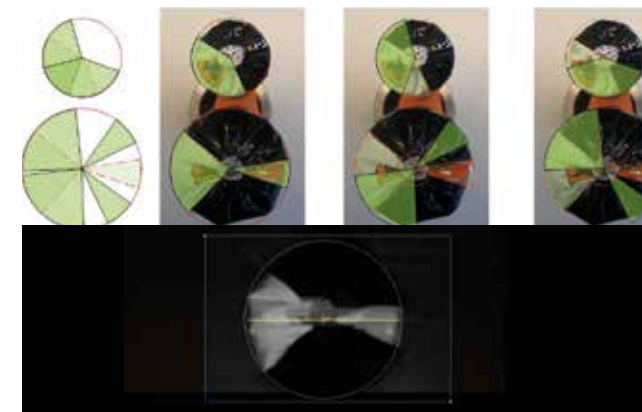
Plug-in contact testing

Industry	Electronics industry
Application	Monitoring of electroplating processes
Assignment	Coating inspection



Glue bead inspection

Industry	Automobile industry
Application	Adhesive & weld seam testing
Assignment	Quality control



Angle of rotation detection

Industry	Logistics industry
Application	Position detection of sacks
Assignment	Warehouse optimisation

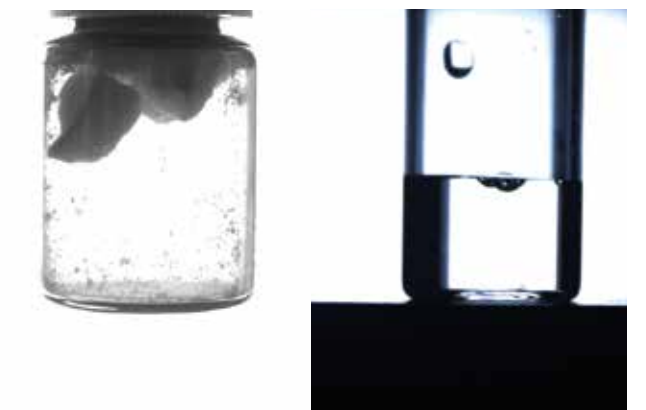
Fish canning inspection

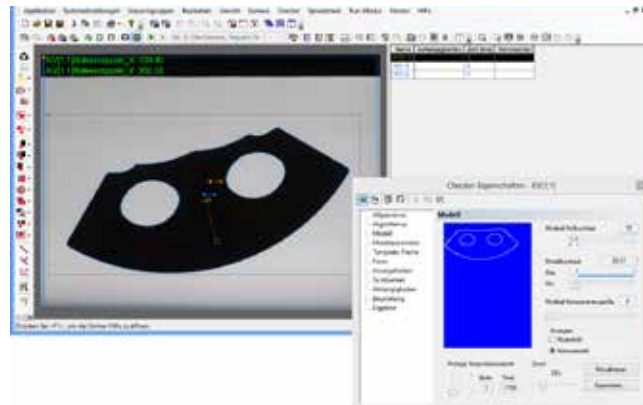
Industry	Foodstuffs industry
Application	Presence check
Assignment	Detection of type and position



Fill level control

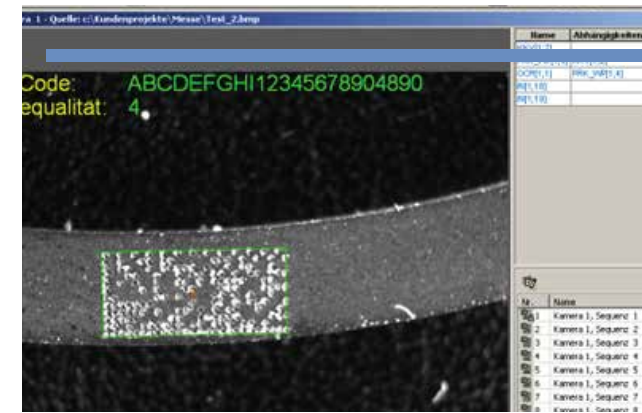
Industry	Medical industry
Application	Fluid testing
Assignment	Detection of fill levels





Position detection

Industry	Universal
Application	Detection of test parts
Assignment	Position & rotation position

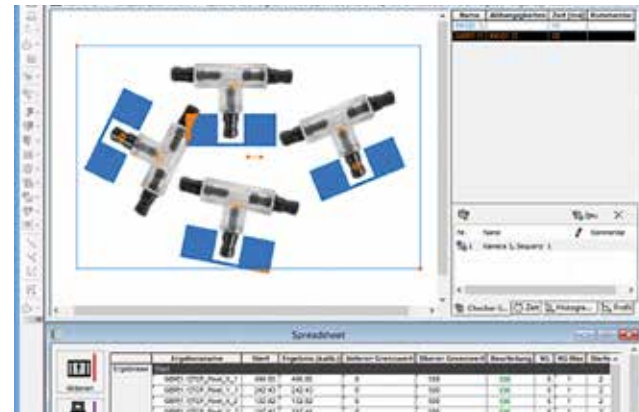


Piston ring code evaluation

Industry	Universal
Application	Code reading
Assignment	Checking of code size 2 mm x 5 mm

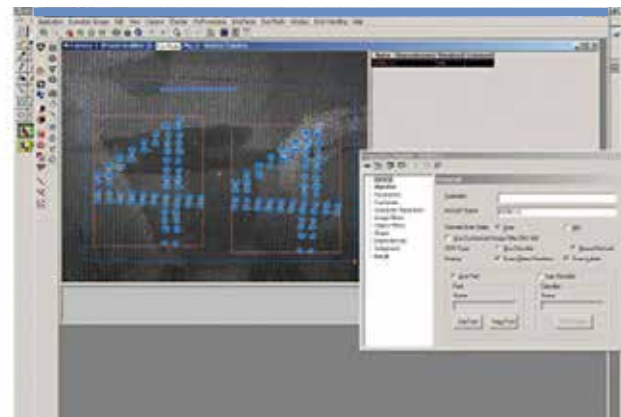
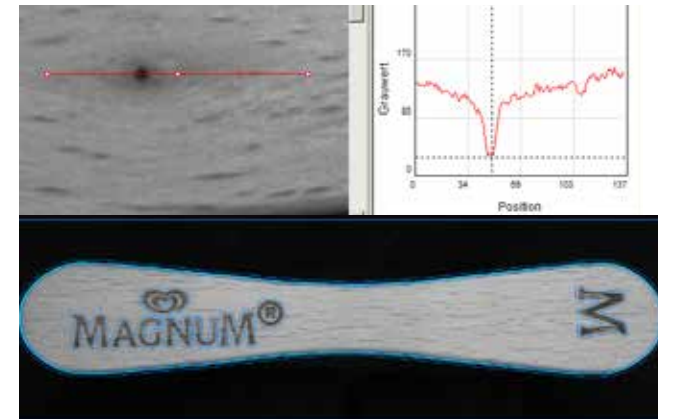
Pick and Place

Industry	Automotive, metal & logistics industry
Application	Contour comparison/Feature extraction
Assignment	Gripping range detection



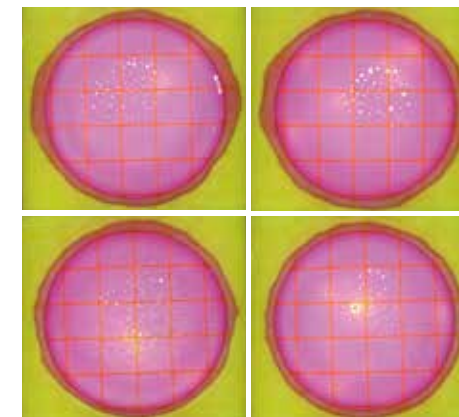
Structural examination

Industry	Foodstuffs industry
Application	Contour comparison & error detection
Assignment	Reading of plain text & form check



Tyre code detection

Industry	Automobile & tyre industry
Application	Readout & error detection
Assignment	Verification of the DOT

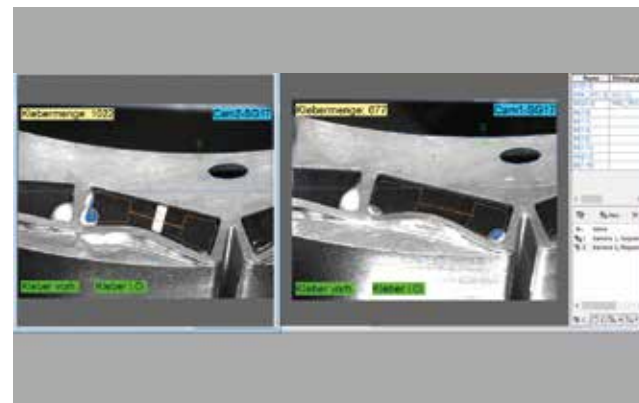


Bacteria testing

Industry	Medical technology
Application	Monitoring of bacteria cultures
Assignment	Counting of bacteria

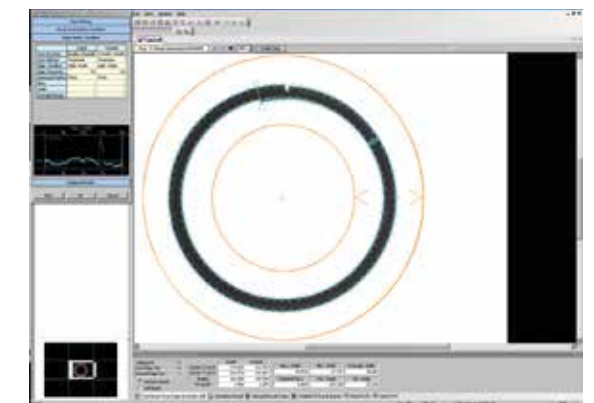
Runtime monitoring

Industry	Universal
Application	Fill level detection
Assignment	Dosage testing



Spring washer inspection

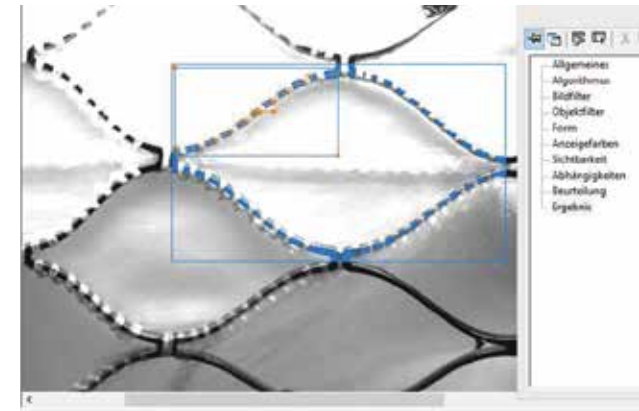
Industry	Automobile & metal industry
Application	Contour inspection & measurement
Assignment	Detection of flaws





Gearwheel measurement

Industry	Universal
Application	Dimensional accuracy & contour inspection
Assignment	Measurement & geometry analysis

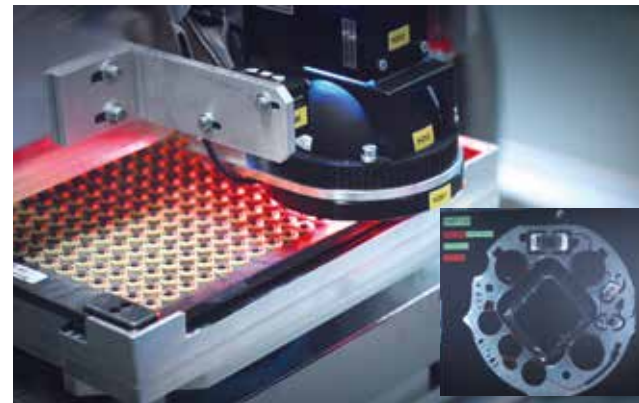


Aortic valve testing

Industry	Pharmaceutical industry
Application	Seam inspection
Assignment	Inspection of manually created seams

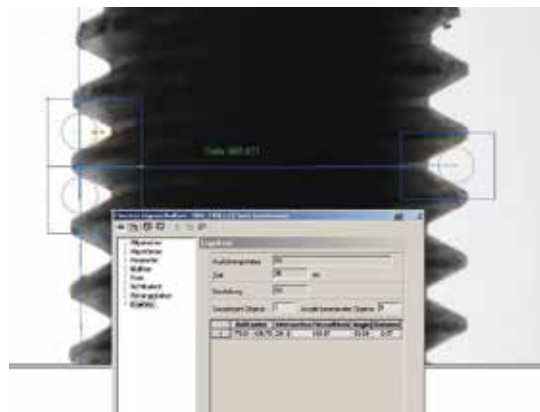
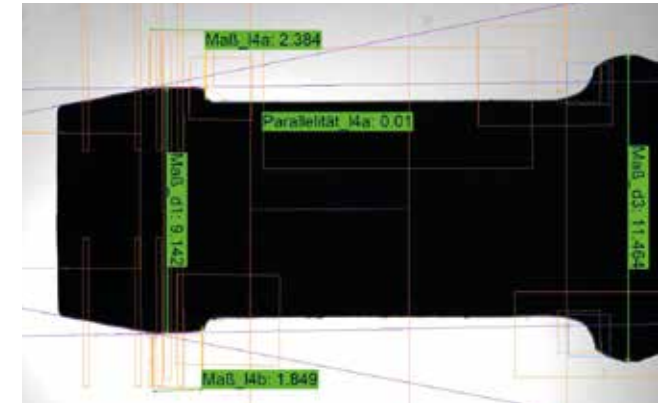
Complete PCB inspection

Industry	Electronics industry
Application	Surface analysis
Assignment	Component inspection



Contour measurement

Industry	Universal
Application	Dimensional inspection
Assignment	Measurement of components



Screw inspection

Industry	Metal & plastics industry
Application	Thread testing
Assignment	Thread pitch measurement

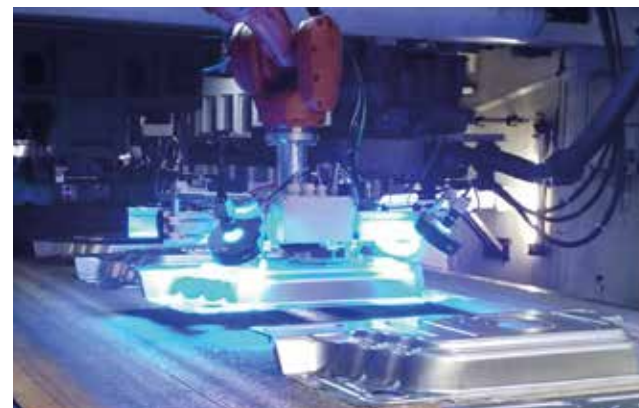


Terminal testing

Industry	Electrical industry
Application	Completeness detection
Assignment	Reading of plain text

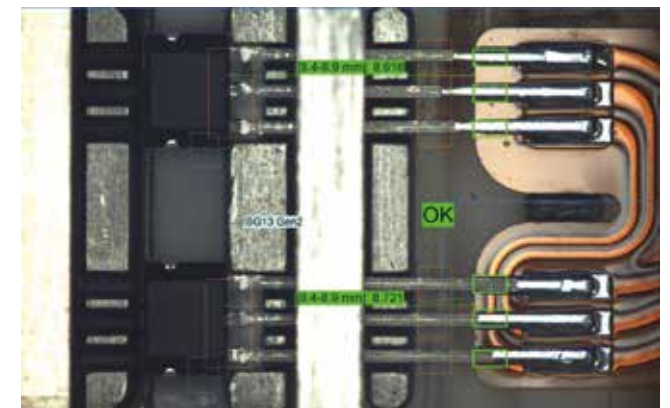
Optical inline inspection

Industry	Metal industry / Forming centre
Application	Checking on the transfer press
Assignment	Checking for cracks & constrictions



Contact check

Industry	Electronics industry
Application	Measurement & analysis
Assignment	Detection of flaws



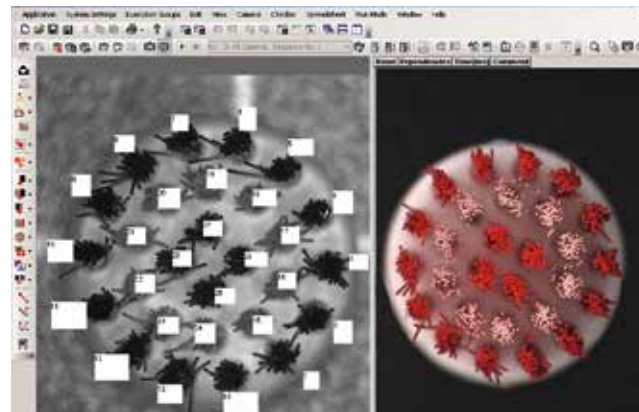


Production control

Industry	Automobile industry
Application	Detection & evaluation
Assignment	Presence & rivet control

Brush head inspection

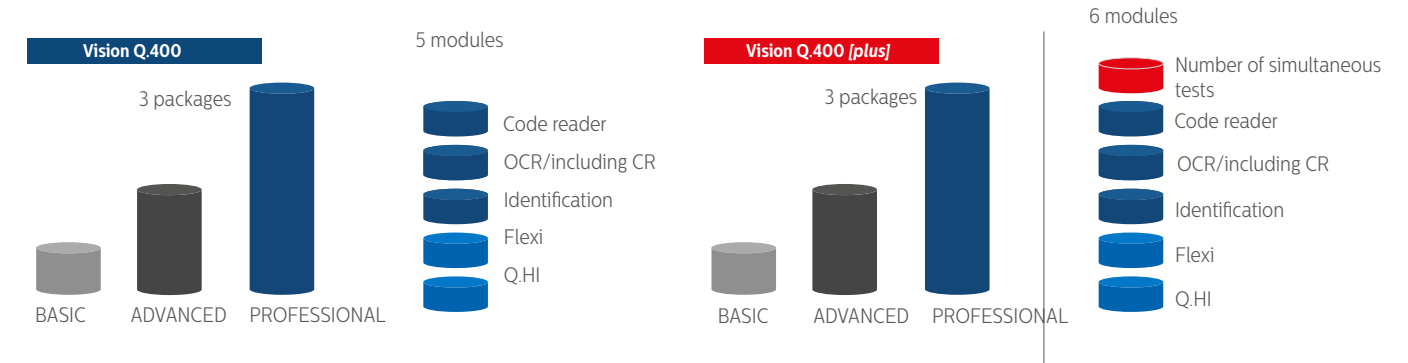
Industry	consumer goods industry
Application	Presence monitoring
Assignment	Colour, quantity & arrangement



Vision Q.400

Unique in many respects.

Vision Q.400 is an optical quality control program that is as easy to use as it is powerful. It is aimed at both end users and system integrators within industrial image processing who wish to implement rapid, straightforward inspection solutions at the highest level, without programming knowledge. Vision Q.400 is available as a software package, or pre-installed on Q.VITEC's Q.400 series image processing systems.



Established and proven

Vision Q.400 is the product of a constant development and improvement process that has lasted over 21 years.



Results display

When developing the Vision Q.400 we placed special importance on the ease of handling results.



Multifunctional

Vision Q.400 provides first-class testing algorithms for (almost) any optical testing or measurement task.



Configuration instead of programming

With Vision Q.400 you don't have to reinvent the wheel. Combine with a click of the mouse.



Quick and robust algorithms

From one of the world's largest electronics groups, we know what matters when it comes to production: speed, stability and reproducibility.

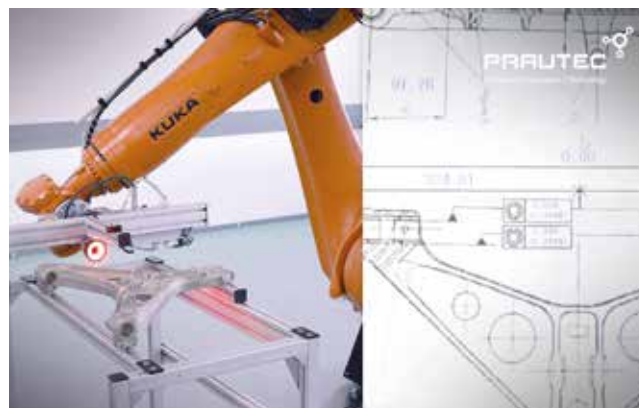


Variable

Vision Q.400 is available as a stand-alone product or ready to use, pre-installed on different hardware platforms.

Robot measurement system

Industry	Aviation & aerospace industry
Application	Measurement according to CAD template
Assignment	Creation of a measurement report



Product variants



Vision Q.400 software

The stand-alone software package Vision Q.400 is the right solution for you if you wish to use existing industrial PCs.



Imagechecker Q.400SD K01 – Low cost system

The Q.400SD K01 provides industrial image processing with great performance in the smallest format. The system impresses with its power density, functionality and flexibility.



Imagechecker Q.400XD – High end system

In addition to excellent computing power, our premium product Q400XD also offers countless expansion options.



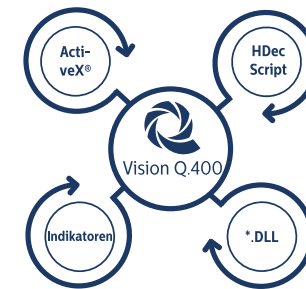
(Currently without Profinet)

NEW

Imagechecker Q.400XD – High end system

In addition to excellent computing power, our premium product Q400XD also offers countless expansion options.

Expansion options



Open to the future

Vision Q.400 offers a variety of options to customise and expand functionality. From the customer-specific result display up to the completely new test algorithm.



Q.HI HALCON

Use the interactive programming environment HDevelop to develop your own customised test sequences and embed them as new “Checkers” into Vision Q.400 with just a few clicks of a mouse.

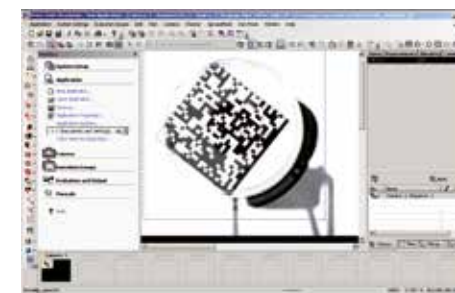
NEW



Vision Q.400 V9.2

- Version number in Microsoft Standard
- New frame grabbers – mE5
- New CameraLink cameras
- VCXG, VCXG.I and VEXG series are supported
- no restart necessary during installation

Free DEMO version



See for yourself! Test Vision Q.400 with the DEMO version. The Vision Q.400 DEMO version is a completely functional simulation of Vision Q.400 and can be used for an unlimited period of time. Cameras cannot be operated with the DEMO version.

<https://bit.ly/3lPfrvV>



Vision Q.400 as UR+ product



The connector between the Universal Robots Interface and the Vision Q.400 software. With this program you have the possibility to control and configure your known Vision Q.400 with the Universal Robot Teach Pendant and to optimize your workflow.



UR Produkte (UR3 - UR16e)

Load capacity	3 - 16 kg
Range	500-1300 mm
Degree of freedom	6 joints
Max Speed	$\pm 180^\circ - \pm 360^\circ/\text{sec.}$
IP classification	IP54 / IP64
Noise pollution	> 60 dB - 72 dB
Footprint	$\varnothing 128\text{mm} - \varnothing 190\text{ mm}$
Weight incl. cable	11 - 33,1 kg

For more information, please visit: "<https://www.universal-robots.com>"



UR Robot & Q.VITEC Camera

- Onboard oder extern
- 1,3 - 12 MP
- IP 67
- Up to 94 fps (148 fps at Burst Mode)
- Operating temperature range $-40^\circ\text{C} - 70^\circ\text{C}$

Vision Q.400 & more

V.Qnect+ is aimed at both end users and system houses for industrial image processing who want to implement inspection solutions quickly and easily at the highest level and without programming knowledge. Regardless of whether completeness checks, measuring

tasks, object recognition, contour checks, positioning or surface inspection are involved, Vision Q.400 covers all industrial inspection tasks. Whether stationary or on a robot makes no difference. In addition, the extensive range of functions can be expanded with individual algorithms.

V.Qnect+ Electrical Kit



The V.Qnect+ kit, which came with the V.Qnect+ URCap, includes a 24V DC power supply and the Q.400SD-R02 PC.

Connections

- LAN
- Camera
- Ringlight
- USB
- HDMI
- Powercable

V.Qnect+ Videos on Youtube

Discover our YouTube videos. On YouTube you can see V.Qnect+ in operation, the easy installation of the Electrical Kit and the installation of the software on the Universal Robot.



Vision Q.400 x Universal Robots



Connect your robot using your IP and port address.



Configure your camera directly on the teach panel and see direct feedback in the toolbar live image.



If you have defined the variable and row in the upper part of the selection menu, you can select a column in the advanced options.



Easy integration of sequence groups into the robot program.



Complex and extensive robot programming.



Live image for perfect alignment of the camera

Camera Mounter

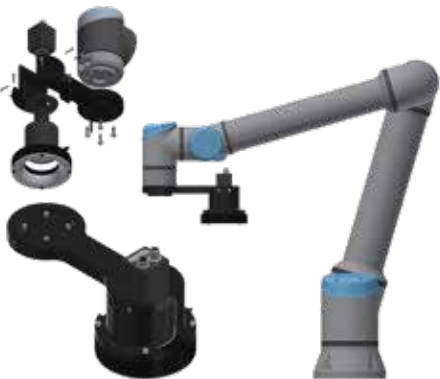
A camera adapter is supplied with every V.Qnect+ kit. Due to the many possible applications of V.Qnect+ we have to make sure that we offer the right mounting option for

each application. If you have questions about the individual camera adapters or you are not sure which adapter is best suited for your application, we are here for you.



Direct camera adapter

Direct connection between camera and robot.



External camera adapter

Connection with possibility on gripper mounting.



Stationary camera adapter

External camera mount

Our solutions...

...as a result of our in-house mechanical engineering.



SLC sorting and packaging

Industry	Universal
Assignment	Autom. sorting and packaging
Advantage	Faster delivery of empty containers

Automatic inspection and pack-aging line

Industry	Electronics industry
Assignment	Testing & packaging of chips
Advantage	Increase in production/quality



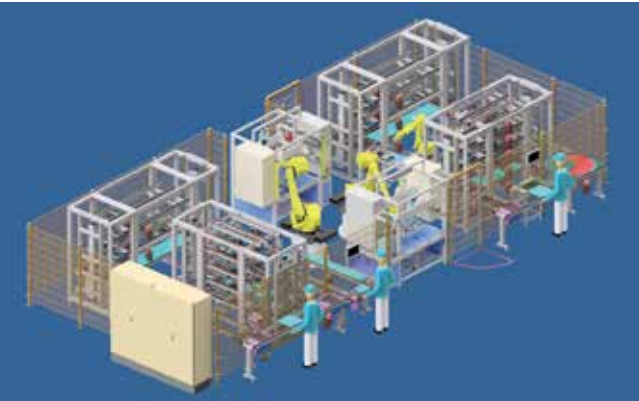
I-panel mounting

Industry	Automobile industry
Assign-ment	Assembly, inspection & handling
Advan-tage	Time & cost savings



Optical inline inspection incl. han-dling

Industry	Metal industry/forming centre
Assignment	Inspection of moving components
Advantage	Cost savings

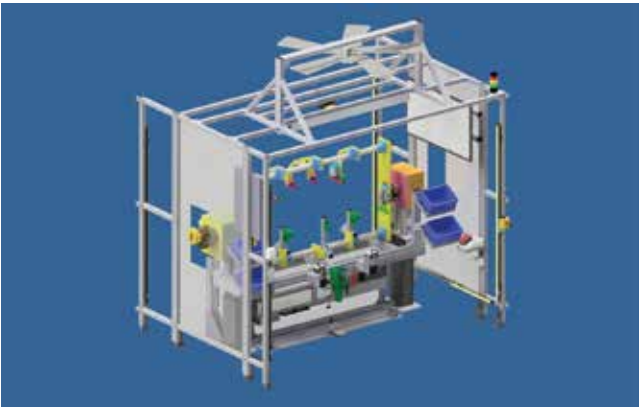


Oil sensor installation

Industry	Automobile industry
Assignment	Autom. installation of oil sensors
Advantage	Increase in production

Manual workstation with assembly inspection

Industry	Automobile industry
Assignment	Ergonomic assembly station
Advantage	Simple handling for employees

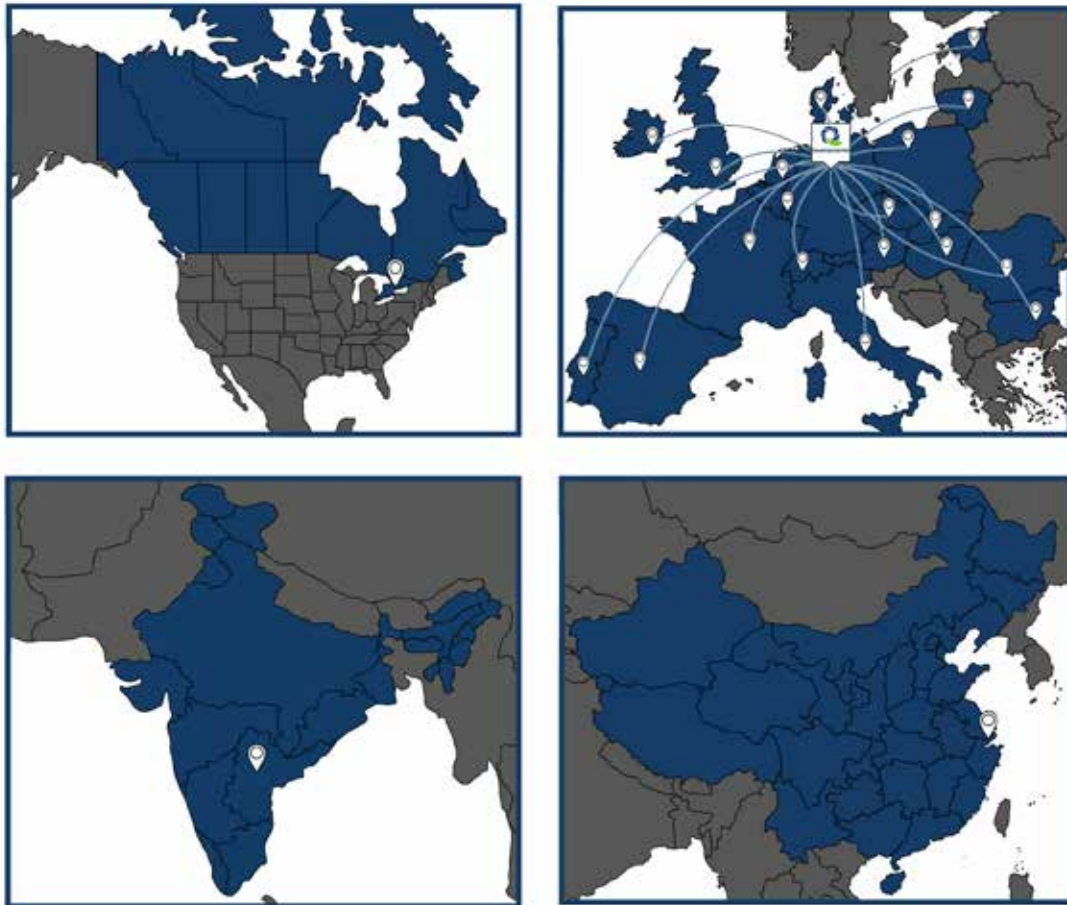


Turbocharger machining & assembly cell

Industry	Automobile & metal industry
Assign-ment	Deburring, laser welding, leakage testing and much more.
Advantage	Time & cost savings



Q.VITEC distribution network



All from the one source

TEC-GROUP



QVITEC GmbH
Hagenburger Str. 54
31515 Wunstorf
Germany, Lower Saxony

Tel.: +49 50 31 / 949 43 20
Fax: +49 50 31 / 949 43 29
E-mail: info@qvitec.de
Web: www.qvitec.de



QVITEC (INDIA) PRIVATE LIMITED
N Heights · Plot No 38
HITEC City, 500081
Hyderabad, India

Tel.: +91 7396421594
Fax: +49 50 31 / 949 43 29
E-mail: info@qvitec.in
Web: www.qvitec.in



PRAUTEC GmbH
Hagenburger Str. 54
31515 Wunstorf
Germany, Lower Saxony

Tel.: +49 50 31 / 939 444 0
Fax: +49 50 31 / 939 444 6
E-mail: service@prautech.de
Web: www.prautech.de



UNITTEC GmbH
Hagenburger Str. 54
31515 Wunstorf
Germany, Lower Saxony

Tel.: +49 50 31 / 949 43 30
Fax: +49 50 31 / 949 43 36
E-mail: info@unittec.de
Web: www.unittec.de